

ES2032 MFP

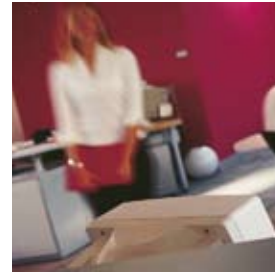
**OKI**  
PRINTING SOLUTIONS



The total document solution  
The perfect answer for business

EXECUTIVE  
SERIES

CREATED BY  
OKI PRINTING SOLUTIONS



## Why OKI Printing Solutions?

**OKI Printing Solutions is the business printing specialist.**

Our single-minded aim is to help businesses to grow and to prosper by enabling them to create the best possible impression with their printed communications. By building on our proven, reliable, single-pass technology, we have developed fast, high quality, cost-effective printing solutions that benefit businesses today and into the future.

We also know how important reliability is for customers. That's why every one of our products is built to perform, day in, day out, helping to maintain business efficiency and provide that competitive edge.

OKI Printing Solutions. No one does more in business printing.

## Why Executive Series?

**Heritage of award winning products.**

Building on OKI Printing Solutions' heritage of award-winning products, the exclusive Executive Series range of Multifunction Products and colour printers provide hassle-free colour document solutions, budgetary control and enhanced workflow efficiency.

Our selected Executive Series partners can provide a print strategy and tailored solution that delivers total peace of mind through fully serviced products and the benefits of predictable budgeting.

# The productive, cost-effective A4 colour multifunction product for demanding workgroups

03

**The ES2032 MFP is a total print solution for small workgroups.**

It offers true 4-in-1 functionality to cover all office needs - print, copy, scan and fax – proving the perfect answer for any business wanting to rationalise hardware investment. This high performing A4 colour MFP is fast, efficient and reliable – bringing extra productivity, capability and cost-savings. It is the latest in a long line of proven MFP products from OKI Printing Solutions, the business printing specialists.

The ES2032 MFP. Enhancing the pace and professionalism of business.



# Business Benefits



## All round performance

### An MFP bringing real benefits to the office



At 20 pages per minute (ppm) colour and 32ppm mono, the ES2032 MFP offers the fastest print speeds in its class.

The excellent scanning support plus additional memory means this machine brings real benefits to the office. Whilst this superior performance will enhance productivity, it won't compromise print quality - the unique combination of ProQ2400 Multi-level technology and microfine toner ensures perfect printing.



#### Reliability

**The dependable ES2032 MFP keeps the work flowing**

Like all OKI Printing Solutions' Executive Series products, the ES2032 MFP is built to perform - day in, day out. Its impressive duty cycle, combined with its single-pass, straight paper path maintains the workflow. As with all OKI Printing Solutions products, reliability is inherent in the design.





## Versatility

**More flexible**  
**More functional**  
**More power to business**

With the superior features and advanced software of the ES2032 MFP, businesses can quickly produce professional results in-house. Anything from booklets to business cards to 1.2m long banners are easy to print and big tasks are handled with ease. An Automatic Document Feeder (ADF) comes as standard and automatic duplex delivers professional double-sided printing.

The high duty cycle, large capacity consumables and excellent paper handling all ensure that workgroups keep printing. The ES2032 MFP offers analogue fax with PSTN connection and 'speed dial' keys, and 'scan-to' capability to e-mail, FTP, HTTPS, PC and TWAIN. This is a true, no compromise colour MFP.



## Ease of use

**Smart design**  
**Easy to operate**

With its ergonomic design, the ES2032 MFP fits the desktop, streamlines the office and is network-ready. The user-friendly operator panel enables every function to be carried out quickly and easily. Copy mode is the default setting which means simple, fast, one-touch copying, while fax speed dial keys ensure quicker, easier faxing.

Nuance PaperPort® software assists in the storing and organising of exact copies of scanned documents and photos on the computer, whilst Nuance OmniPage® allows hard copies to be scanned and turned into editable text documents, such as Microsoft Word quickly, easily and accurately.



## Management & Control

**Manage colour use**  
**Keep control of costs**

Included within the ES2032 MFP are three useful and powerful pieces of software, all of which help to keep costs down and productivity up. Set-up utility allows easy installation across a network, PrintSuperVision enables administrators to remotely monitor all printers and Print Control makes it simple to monitor and manage print usage.



## Output Quality

**Create high quality**  
**colour documents and**  
**a great impression**

Class-leading speed with professional print and copy quality. ProQ2400 Multi-level technology and microfine toner have been developed together to give a finer level of detail, greater colour depth, reduced grain and a high gloss feel.

Photo Enhance ensures stunning pictures on ordinary office paper for truly professional looking documents, while Auto Colour Balance ensures consistent results throughout the life of the printer.

# Product Features



# ES2032 MFP

The ES2032 MFP is the latest Executive Series product within the OKI Printing Solutions' MFP range. This A4 model updates and replaces the existing products, bringing improved functionality and speed to business. It offers many extra features, yet still remains extremely cost-effective.

## 1. Print Speed

Thanks to single-pass digital LED printing, the ES2032 MFP is able to offer fast print speeds of 20ppm for colour and a class-leading 32ppm for mono. Quick time to first print for enhanced productivity.

## 2. Copy Speed

The ES2032 MFP handles large volumes of paperwork with speed and ease. At 20 copies per minute (cpm) for colour and 32cpm mono it is the fastest in its class.

## 3. Print Quality

Class-leading speed and professional print quality. ProQ2400 Multi-level technology and microfine toner together give finer level of detail, greater colour depth, reduced grain and a high gloss feel. Photo Enhance enables printing of impressively sharp photo-like pictures on ordinary office paper.

## 4. Range of Media Handling

The ES2032 MFP offers best in class paper handling for professional in-house printing. It handles everything from business cards, CD labels and banners up to 1.2m long, plus heavyweight media up to 203gsm. Automatic duplex gives double-sided booklet printing to reduce paper costs and improve document appearance.

## 5. Intuitive User Interface

The unique operator panel with its user-friendly layout simplifies and speeds up the day's business tasks. There are special 'fax speed dial keys' for easier, faster transmissions and a one-touch 'copy key' for immediate colour and mono copying. This means no waiting, fewer mistakes and greater business efficiency.

## 6. Scanning

The ES2032 MFP offers flexible scanning of documents to assist in document creation. It's a simple task with the user-friendly control panel, and for extra versatility the integrated scanner can be controlled from the MFP or PC.





- 1
- 2
- 3
- 4
- 5
- 6



# The ES2032 MFP Colour and Mono Multifunction Product

		ES2032 MFP
<b>Speed &amp; throughput</b>	A4 Print speed	20ppm colour, 32ppm mono
	Time to first print	8 seconds mono 11 seconds colour
	Printer warm up time	Less than 60 seconds from power on
	Print resolution	ProQ2400 Multi-level technology, 1200 x 600 dpi
	Printer language	PCL/PS
	OS Compatibility	Windows 2000, Server 2003, XP (32 & 64 bit), Vista (32 & 64 bit) <sup>1</sup>
	Duplex printing	Standard
	Processor speed	500 MHz
<b>Scan</b>	Fonts	86 PCL, 136 PS
	Scanner warm up time	Less than 90 seconds from power on
	Scan resolution	Optical resolution 1200 x 1200 dpi, 4800 dpi interpolated
	Scan speed	Up to 20ppm
	Colour depth	Input 48 bit, output 24 bit
	Document input	50 sheet Automatic Document Feeder, Flatbed scanner
	Contrast	5 level adjustment
	Scan address	300
<b>Copy</b>	Scan to	E-mail, FTP, CIFS and TWAIN
	Format	PDF, JPEG, TIFF, M-TIFF
	First copy out	23 seconds colour / 16 seconds mono
	Copy speed	Up to 20cpm colour / 32cpm mono
	Copy resolution	600 x 600 dpi
<b>Memory</b>	Reduction/Enlargement	25% - 400%
	Maximum copies	99 copies
	RAM	256MB
<b>Document management</b>	Hard Disk Drive	Optional 40GB
		Nuance PaperPort®, Nuance OmniPage®
<b>Utility Suite</b>		Template Manager 2006, Print Control, Storage Device Manager <sup>2</sup> , PrintSuperVision, OKI LPR, Color Swatch, Color Correct, Network Setup Tool, Web Driver Installer, Profile Assistant <sup>2</sup>
<b>Fax</b>	Connectivity	PRJ11x2 (Line/Tel) PSTN (public phone lines), PBX (independent internal lines)
	Speed	ITU-T G3 (Super G3) 33.6 kbps, 3 seconds/page
	Fast dialling	10 one touch dials, 200 speed dials
	Groups	Up to 20 groups
	Broadcast	Maximum 100
	Page memory	1.5MB – approximately 90 pages
<b>Paper handling</b>	Tray 1	300 sheets. Paper sizes: A4, A5, B5, A6. Paper weights 64 – 120gsm
	Multi-purpose tray	100 sheets. Paper sizes: A4, A5, B5, A6, CD Solutions, Labels, Business Cards, Banners up to 215 x 1200mm. Paper weights 75 – 203gsm
	Optional 2nd tray	530 sheets. Paper sizes: A4, A5, B5. Paper weights 64 – 176gsm
	Duplex	Paper sizes: A4, A5, B5, 148mm x 210mm – 215.9mm x 355.6mm. Paper weights 75 – 105gsm
	Paper feeding	50 sheet Automatic Document Feeder as standard
	Paper output	250 sheets face down, 100 sheets face up
<b>Operating conditions</b>	Temperature/Humidity	10°C – 32°C (17°C – 27°C recommended) / 20% – 80% RH non condensing (50% – 70% RH recommended)
	Storage	- 10°C – 43°C, 10% – 90% RH
	Noise	Operating: 59.5dB(A), Standby: 37dB(A)
<b>Power requirements</b>	Power supply	220 – 240V, 50 – 60 Hz
	Power consumption	Peak 1200W, Standby 110W, Normal 490W, Power Save below 27W
	Interface connections	Hi-Speed USB 2.0, Ethernet 10/100Base Tx
<b>Dimensions (HxWxD)</b>		700 x 500 x 600mm
<b>Weight</b>		37kg
<b>Accessories</b>	Memory	Optional 256MB, 512MB
	Hard Disk Drive	Optional
	Second tray	Optional
	Cabinet	Optional

<sup>1</sup> Check local OKI Executive Series website for latest driver releases

<sup>2</sup> Check local OKI Executive Series website for latest OS Compatibility

<sup>\*</sup> Requires Hard Disk Drive

**Consumables Information:** For the protection of your printer, and in order to ensure that you benefit from its full functionality, this model has been designed to operate only with genuine OKI Printing Solutions toner cartridges. These can be identified by the OKI trademark. Any other toner cartridge may not operate at all, even if it is described as “compatible”, and if it does work, your printer’s performance and print quality may be degraded.

Specification subject to change without notice. All trademarks acknowledged.

**OKI EUROPE LTD.**  
 Central House, Balfour Road  
 Hounslow, Middlesex TW3 1HY  
 United Kingdom  
 T +44(0) 20 8219 2190  
 F +44(0) 20 8219 2199  
[WWW.OKIEXECUTIVESERIES.COM](http://WWW.OKIEXECUTIVESERIES.COM)

